

Impact Receipt Printer



Retail



Hospitality



Data Terminals



Ticketing

a Better Solution
for your Business™

New standard for Impact Printer

SRP-275

SRP-275 Highlights

- **Fast printing speed (up to 5.1 lines per second) (15% faster than the SRP-270)**
- Optimized mechanical components and software to enable fast and stable printing
- Logic seeking, bi-directional printing technology allows higher speed than previous models with much less noise
- **Built-in power supply**
- **Drop in and print paper loading**
- Lift the lid, drop in the roll, and close the lid and print. Nothing could be easier
- No more feeding rolls through slots or rollers
- **Long lasting auto-cutter (up to 1.5 million cuts)**
- easy paper-jam removal
- **Proven reliability**
- **Multiple paper widths supported (76 ± 0.5mm)**
- **User-friendly software tools included**
- Logo/ Firmware download
- Virtual Memory Switch Manager (VMSM)
- **Two different models**
- SRP-275C (with auto-cutter)
- SRP-275A (without auto-cutter)



SRP-275 The New standard For Impact Printers

The BIXOLON SRP-275 is an enhanced, more powerful successor to BIXOLON's best-selling SRP-270 Series of receipt printers. The BIXOLON SRP-275 receipt printer is compact, reliable and fast, and offers all of the easy-to-use features important to retail, restaurant, and hospitality environments.

MAIN FEATURES WITH SPECIFICATIONS

Fastest printing in it's class

The SRP-275 is optimized for high-speed so customer receipts allowing kitchen orders print faster and quieter than ever. More than 5.1 lines per second and an integrated graphics memory produce receipts in shortest time without delaying customers or guests.

Drop in paper loading with paper width guide

For maximum efficiency, the SRP-275 offers drop-in paper loading to easily change the paper with one-hand.



Easy Paper Loading

Built-in power supply

The 220V AD adapter is elegantly integrated into the compact printer housing. Consequently, messing around with cables is avoided which is ideal at space-limited POS terminals or highly frequented cash desks.

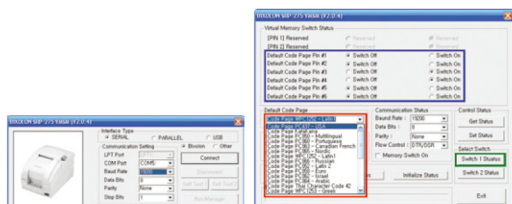


Built-in Power Supply

Proven reliability

With an average performance of 18 million rows without failure, this printer gives you all reliability you need for long-term use and the auto-cutter for the SRP-275 is also guaranteed up to 1.5 million cuts with easy paper-jam removal.

User-friendly software tools



PRINT

- PRINTING METHOD : 9 Pin Serial Dot Matrix
- PRINTING SPEED : 5.1 lines per second
- RESOLUTION : Horizontal Resolution : 80 dpi / Vertical Resolution : 144 dpi
- CHARACTER SIZE (W X H dots) : Font A : 9 X 9, Font B : 7 X 9
Korean : 17 X 9, Chinese : 16 X 16
- CHARACTERS PER LINE : FontA:35 (3half dot:33) , Font B : 40 /
Korean: 20, Chinese :22 (3half dot:21)
- CHARACTER SET : Alphanumeric Character : 95
Extended Graphics Pages : Standard : 128 x 27
Chinese : 128 x 21
Korean : 128 x 1
International Character : 48

PAPER

- WIDTH : 76 ± 0.5mm
- PAPER ROLL DIAMETER : Max Ø 83.0mm
- PAPER LOADING : Drop in paper loading

RELIABILITY

- PRINTER UNIT : 18,000,000 Lines
- TPH : 300 Million dots/wire
- AUTO CUTTER : 1,500,000 cuts

INTERFACE : Serial(RS-232C), Parallel (IEEE1284), USB, Ethernet

RECEIVE BUFFER : 8 Kbytes

NV IMAGE MEMORY : 256 Kbytes

EMULATION : ESC/POS™

DRIVER : Windows Driver, OPOS Driver

SENSOR : Paper Near End Sensor, Paper End Sensor,
Wall Mounting Paper Near End Sensor, Rear Cover Open Sensor

DRAWER PORT : 2 Drivers

POWER SUPPLY (SMPS) : AC 100~240V / DC 24V, 1.5A

DIMENSIONS : 160 X 239 X 157 (W X L X H mm)

OPERATING TEMPERATURE : 0~40 °C / 32 ~ 104 °F

OPTIONS

- WALL MOUNT (RWM-350)
- SPLASH PROOF COVER (RSC-275)
- MELODY BOX (RMB-100)

BIXOLON® www.bixolon.com

This publication carries product description without obligation and is not to be seen as a firm offer.
All specifications and design are subject to change without notice. February 2009

BIXOLON Headquarters

Address #A-5F, Digital Empire Building, 980-3, Yeongtong-dong,
Yeongtong-gu, Suwon-si, Gyeonggi-do, 443-702, Korea
Tel +82 (0) 31 218 5500 Fax +82 (0) 31 218 5589
E-mail sales@bixolon.com

BIXOLON America Inc.

Address 1210 E. 223rd street Suite #330 Carson, CA 90745
Tel +1 858 764 4580 Fax +1 310 522 9319
E-mail sales@bixolonusa.com

BIXOLON Europe GmbH

Address Tiefenbroicher Weg 35, 40472 Düsseldorf
Tel +49 (0) 211 68 78 54 0 Fax +49 (0) 211 68 78 54 20
E-mail sales@bixolon.de